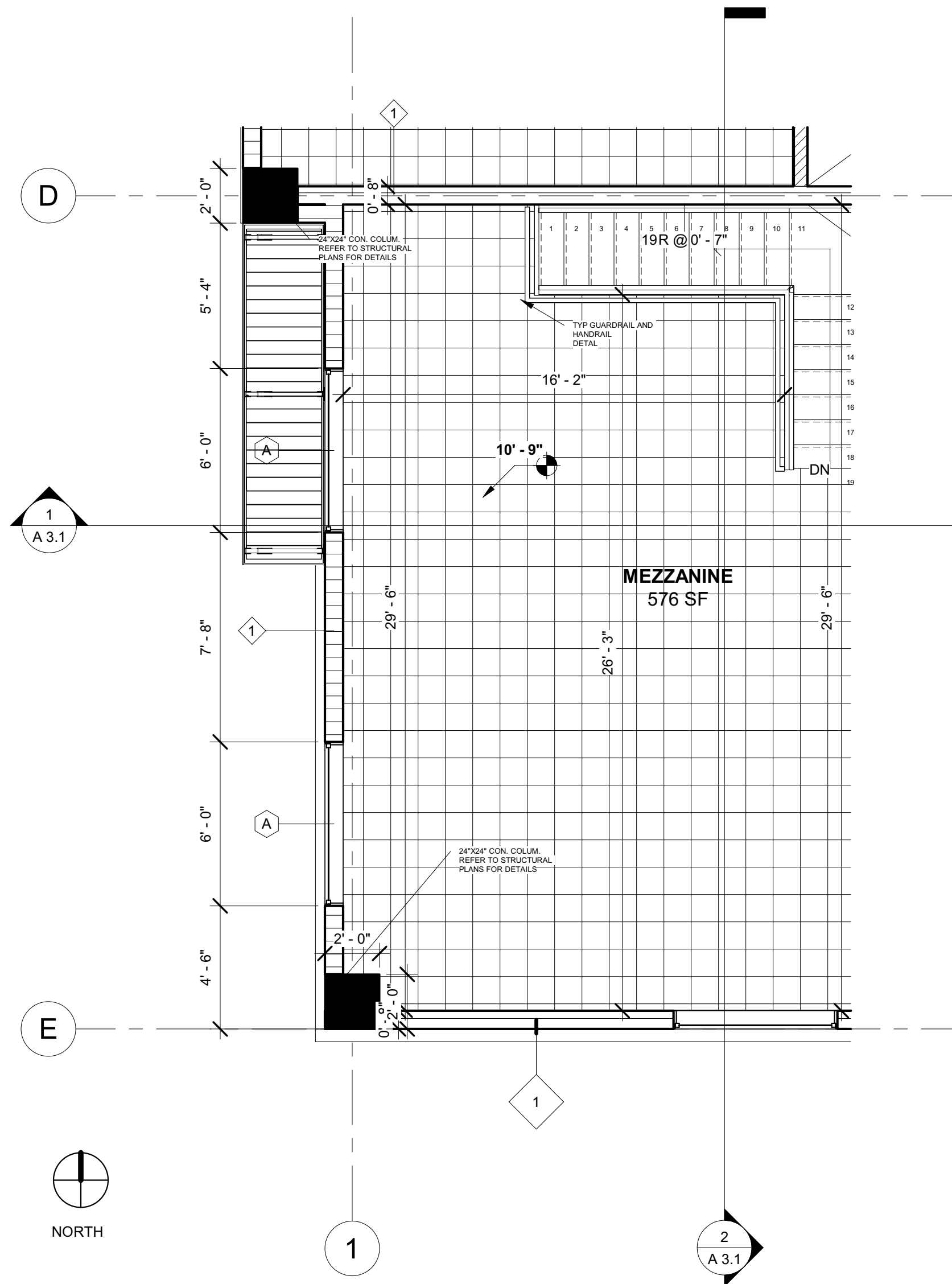


1 1ST FLOOR (0'-0") - Callout 1
1/4" = 1'-0"

1 PROPOSED ENLARGE ENTRANCE FLOOR PLAN

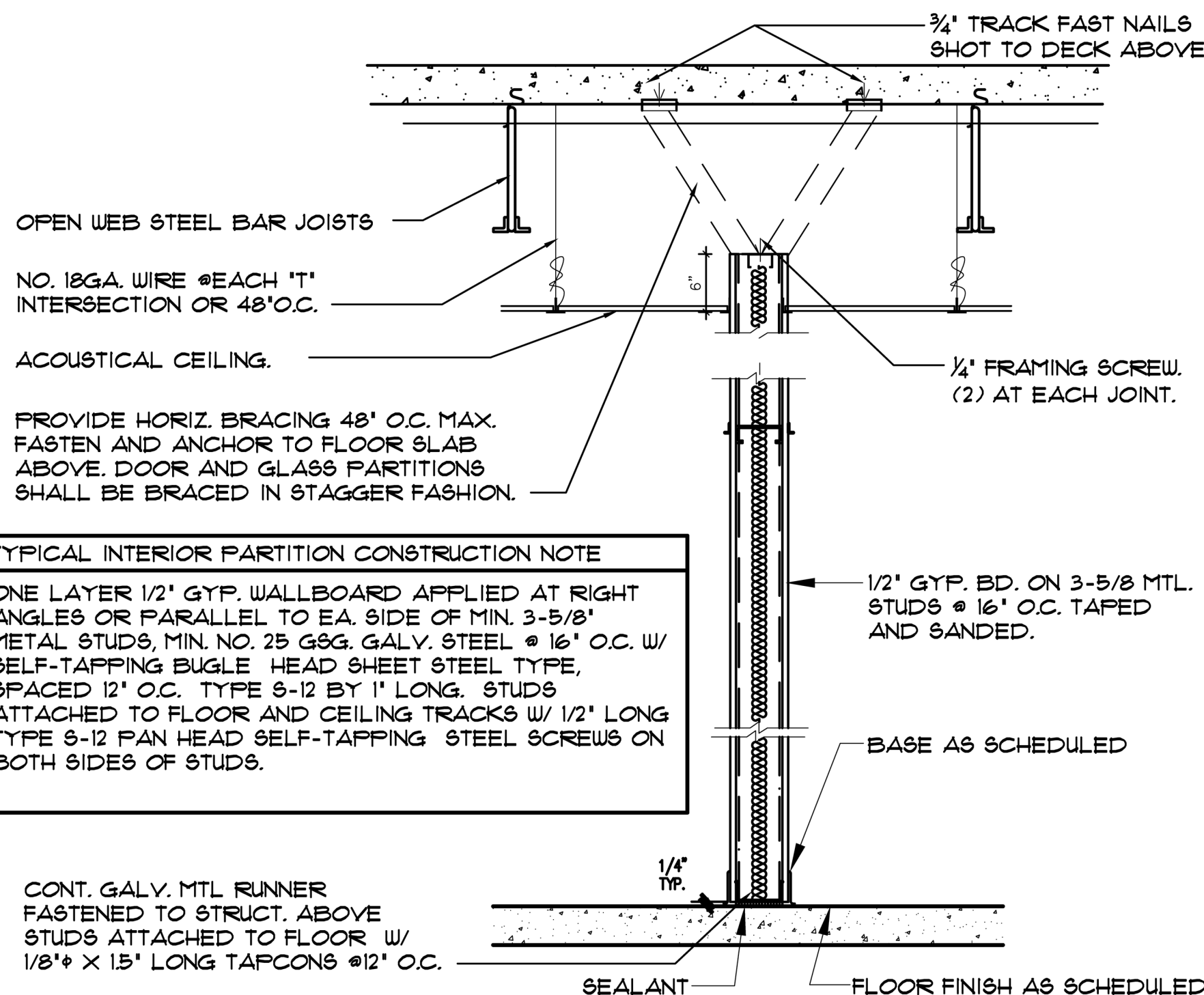


2 2ND FLOOR PLAN (+10'-8") - Callout 1
1/4" = 1'-0"

2 PROPOSED ENLARGE MEZZANINE FLOOR PLAN

- Bearing Wall Rating — 2 HR.**
- Nonbearing Wall Rating — 2 HR**
- This design was evaluated using a load design method other than the Limit States Design Method (e.g., Working Stress Design Method). For jurisdictions employing the Limit States Design Method, such as Canada, a load restriction factor shall be used — See Guide **BXUV** or **BXUV7****
- * Indicates such products shall bear the UL or cUL Certification Mark for jurisdictions employing the UL or cUL Certification (such as Canada), respectively.**
- 1. Concrete Blocks*** — Various designs. Classification D-2 (2 hr). See Concrete Blocks category for list of eligible manufacturers.
- 2. Mortar** — Blocks laid in full bed of mortar, nom. 3/8 in. thick, of not less than 2-1/4 and not more than 3-1/2 parts of clean sharp sand to 1 part Portland cement (proportioned by volume) and not more than 50 percent hydrated lime (by cement volume). Vertical joints staggered.
- 3. Portland Cement Stucco or Gypsum Plaster** — Add 1/2 hr to classification if used. Where combustible members are framed in wall, plaster or stucco must be applied on the face opposite framing to achieve a max. Classification of 1-1/2 hr. Attached to concrete blocks (Item 1).
- 4. Loose Masonry Fill** — If all core spaces are filled with loose dry expanded slag, expanded clay or shale (Rotary Kiln Process), water repellent vermiculite masonry fill insulation, or silicone treated perlite loose fill insulation add 2 hr to classification.
- 5. Foamed Plastic*** — (Optional-Not Shown) — 1-1/2 in. thick max, 4 ft wide sheathing attached to concrete blocks (Item 1).
- ATLAS ROOFING CORP** — "EnergyShield Pro Wall Insulation", "EnergyShield Pro 2 Wall Insulation", EnergyShield CGF Pro and EnergyShield Ply Pro
- CARLISLE COATINGS & WATERPROOFING INC** — Type R2+ SHEATHE
- FIRESTONE BUILDING PRODUCTS CO L L C** — "Enverge™ CI Foil Exterior Wall Insulation" and "Enverge™ CI Glass Exterior Wall Insulation"
- HUNTER PANELS** — Types "Xci-Class A", "Xci Foil (Class A)", "Xci 286"
- RMAX OPERATING L L C** — Types "TSX-8500", "ECOMAXci FR", "TSX-8510", "ECOMAX xi FR White", "ECOMAXci", "ECOMAXci FR Air Barrier", "Thermasheath-XP", "Thermasheath", "Durasheath", "Thermasheath-3", "Durasheath-3".
- THE DOW CHEMICAL CO** — Types Thermax Sheathing, Thermax Light Duty Insulation, Thermax Heavy Duty Insulation, Thermax Metal Building Board, Thermax White Finish Insulation, Thermax ci Exterior Insulation, Thermax XARMOR ci Exterior Insulation, Thermax IH Insulation, Thermax Plus Liner Panel, Thermax Heavy Duty Plus (HDP) and TUFF-R™ ci Insulation
- 5A. Building Units** — As an alternate to Items 5, min. 1-in thick polyisocyanurate composite foamed plastic insulation boards, nom. 48 by 48 or 96 in.
- HUNTER PANELS** — "Xci NB", "Xci Ply"
- RMAX OPERATING L L C** — "Thermasheath-SI", "ECOBASEci", "ThermaBase-CI", "ECOMAXci FR Ply", "ECOMAXci Ply".
- * Indicates such products shall bear the UL or cUL Certification Mark for jurisdictions employing the UL or cUL Certification (such as Canada), respectively.**

3 TYPICAL- 2 HOUR MASONRY WALL



4 TYPICAL INTERIOR PARTITION

Door Schedule				
Mark	Count	Family	Height	
1	4	Dr-CMU	8' - 0"	
2	2	Single-Flush	6' - 8"	
3	4	Puerta basculante enrollable	12' - 0"	
4	2	Single-Flush	<varies>	
5	2	Door-Bifold_9052	6' - 8"	
8	1	Single-Flush	8' - 0"	

Window Schedule				
Mark	Count	Family	Width	Height
A				
A	12	Fixed	6' - 0"	5' - 0"
B				
B	1	Fixed	6' - 0"	5' - 0"
C				
C	1	Fixed	6' - 0"	5' - 0"
D				
D	1	Fixed	6' - 0"	5' - 0"
E				
E	1	Fixed	6' - 0"	5' - 0"
G				
G	1	Fixed	6' - 0"	5' - 0"
H				
H	1	Fixed	6' - 0"	5' - 0"
I				
I	1	Fixed	6' - 0"	5' - 0"
J				
J	1	Fixed	6' - 0"	5' - 0"
K				
K	1	Fixed	6' - 0"	5' - 0"
L				
L	1	Fixed	6' - 0"	5' - 0"
M				
M	1	Fixed	6' - 0"	5' - 0"
N				
N	1	Fixed	6' - 0"	5' - 0"